

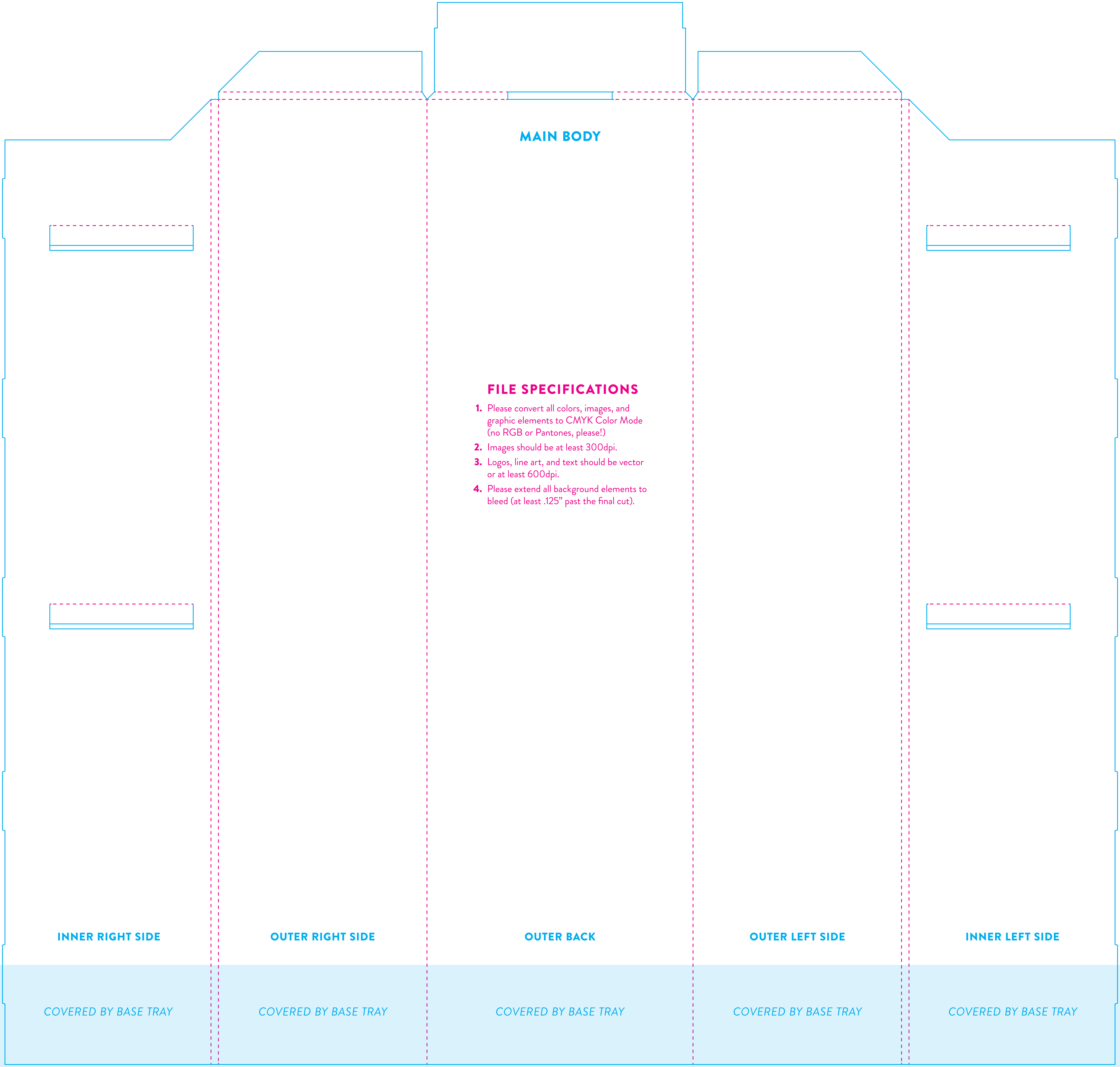
HEADER CARD

FILE SPECIFICATIONS

- 1. Please convert all colors, images, and graphic elements to CMYK Color Mode (no RGB or Pantones, please!)
- 2. Images should be at least 300dpi.
- 3. Logos, line art, and text should be vector or at least 600dpi.
- 4. Please extend all background elements to bleed (at least .125” past the final cut).

BACK

FRONT



MAIN BODY

FILE SPECIFICATIONS

- 1. Please convert all colors, images, and graphic elements to CMYK Color Mode (no RGB or Pantones, please!)
- 2. Images should be at least 300dpi.
- 3. Logos, line art, and text should be vector or at least 600dpi.
- 4. Please extend all background elements to bleed (at least .125" past the final cut).

INNER RIGHT SIDE

OUTER RIGHT SIDE

OUTER BACK

OUTER LEFT SIDE

INNER LEFT SIDE

COVERED BY BASE TRAY

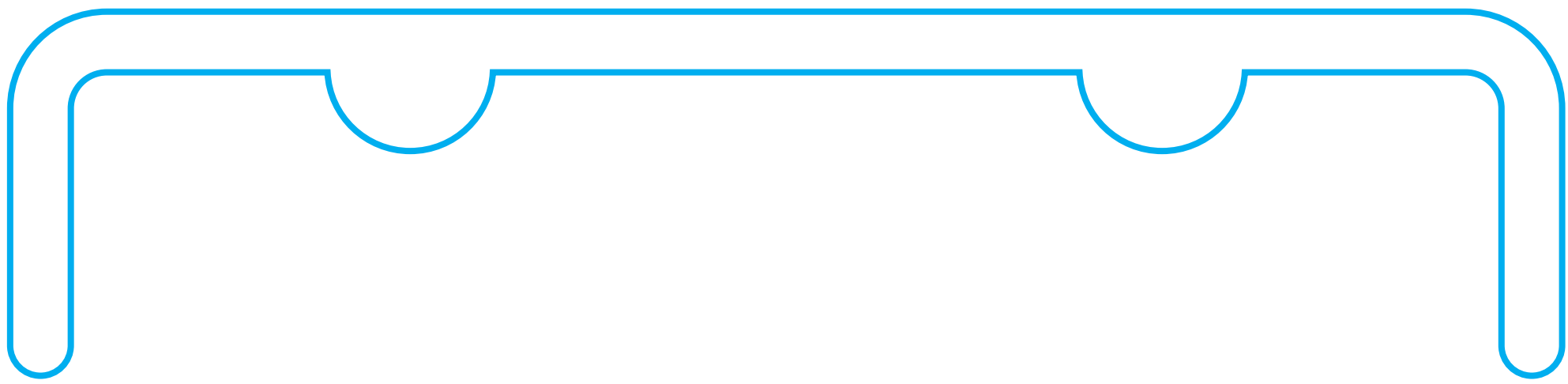
COVERED BY BASE TRAY

COVERED BY BASE TRAY

COVERED BY BASE TRAY

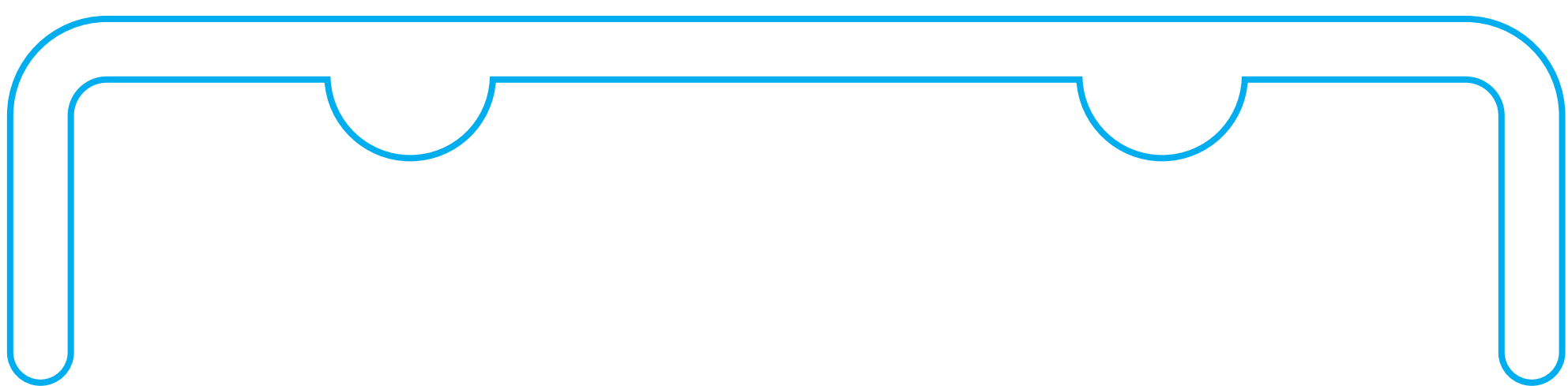
COVERED BY BASE TRAY

SHELF SUPPORT



FILE SPECIFICATIONS

- 1. Please convert all colors, images, and graphic elements to CMYK Color Mode (no RGB or Pantones, please!)
- 2. Images should be at least 300dpi.
- 3. Logos, line art, and text should be vector or at least 600dpi.
- 4. Please extend all background elements to bleed (at least .125” past the final cut).



INNER BACK

TOP SHELF

FILE SPECIFICATIONS

- 1. Please convert all colors, images, and graphic elements to CMYK Color Mode (no RGB or Pantones, please!)
- 2. Images should be at least 300dpi.
- 3. Logos, line art, and text should be vector or at least 600dpi.
- 4. Please extend all background elements to bleed (at least .125” past the final cut).

BASE

FACE

BOTTOM

TOP SHELF SUPPORT BAR

FILE SPECIFICATIONS

1. Please convert all colors, images, and graphic elements to CMYK Color Mode (no RGB or Pantones, please!)
2. Images should be at least 300dpi.
3. Logos, line art, and text should be vector or at least 600dpi.
4. Please extend all background elements to bleed (at least .125" past the final cut).

*SOLID COLOR OR CONTINUOUS PATTERN
RECOMMENDED*

MIDDLE SHELF

FILE SPECIFICATIONS

- 1. Please convert all colors, images, and graphic elements to CMYK Color Mode (no RGB or Pantones, please!)
- 2. Images should be at least 300dpi.
- 3. Logos, line art, and text should be vector or at least 600dpi.
- 4. Please extend all background elements to bleed (at least .125” past the final cut).

BASE

FACE

BOTTOM

MIDDLE SHELF SUPPORT BAR

FILE SPECIFICATIONS

1. Please convert all colors, images, and graphic elements to CMYK Color Mode (no RGB or Pantones, please!)
2. Images should be at least 300dpi.
3. Logos, line art, and text should be vector or at least 600dpi.
4. Please extend all background elements to bleed (at least .125" past the final cut).

*SOLID COLOR OR CONTINUOUS PATTERN
RECOMMENDED*

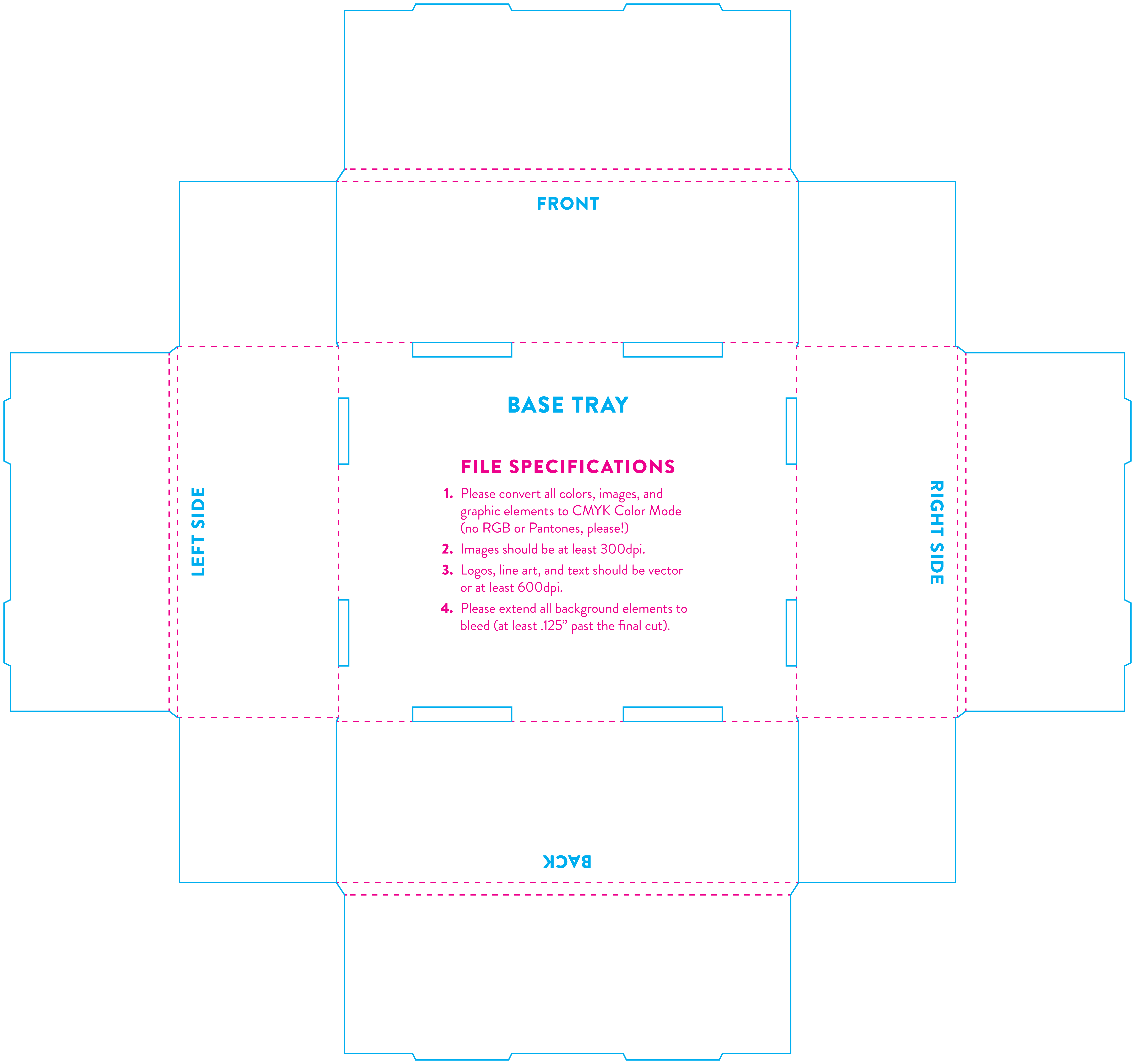


BOTTOM SHELF RISER

FILE SPECIFICATIONS

1. Please convert all colors, images, and graphic elements to CMYK Color Mode (no RGB or Pantones, please!)
2. Images should be at least 300dpi.
3. Logos, line art, and text should be vector or at least 600dpi.
4. Please extend all background elements to bleed (at least .125” past the final cut).

TOP OF RISER



FRONT

BASE TRAY

FILE SPECIFICATIONS

1. Please convert all colors, images, and graphic elements to *CMYK Color Mode* (no RGB or Pantones, please!)
2. Images should be at least 300dpi.
3. Logos, line art, and text should be vector or at least 600dpi.
4. Please extend all background elements to bleed (at least .125" past the final cut).

LEFT SIDE

RIGHT SIDE

BACK