

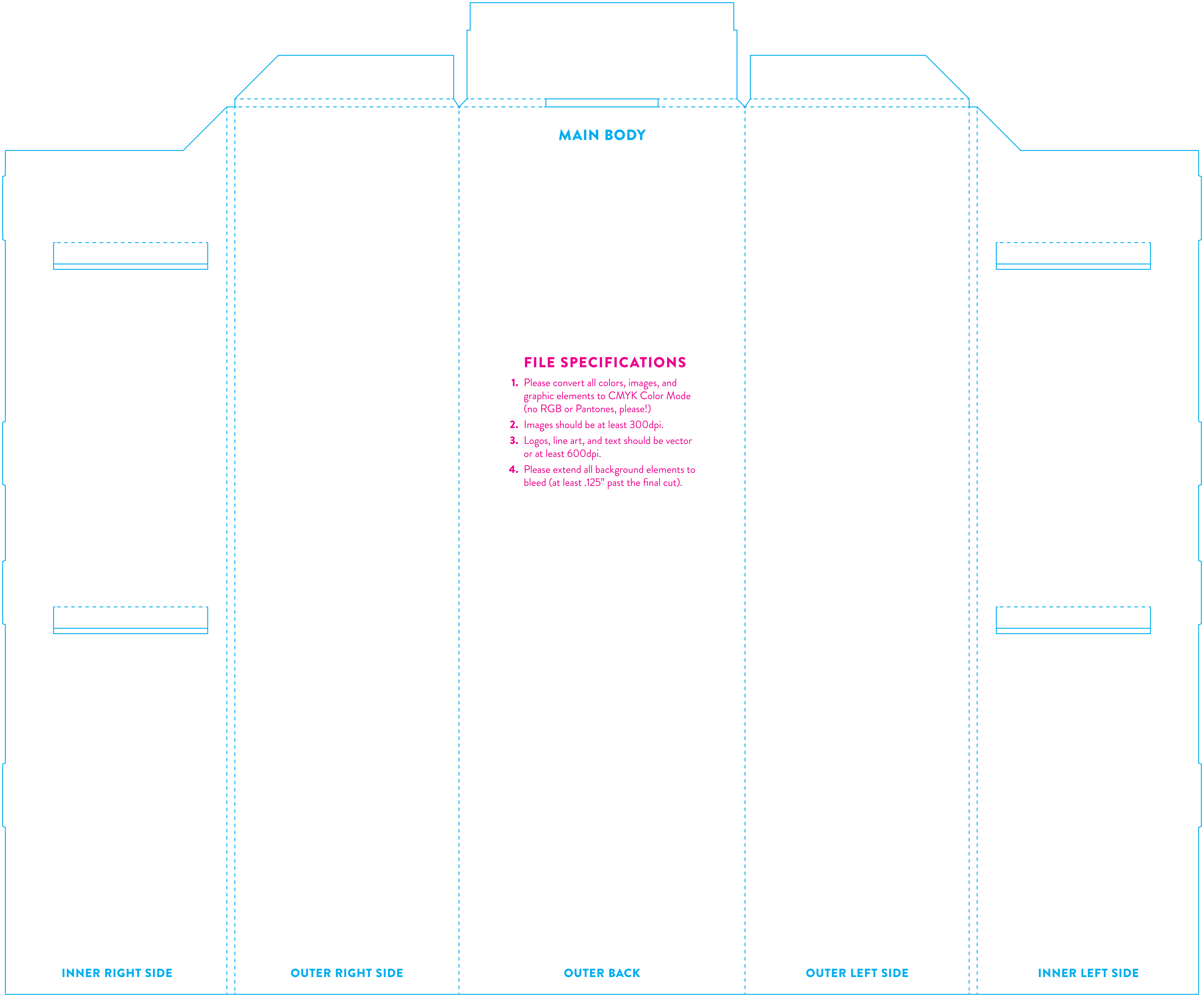
HEADER CARD

FILE SPECIFICATIONS

- 1. Please convert all colors, images, and graphic elements to CMYK Color Mode (no RGB or Pantones, please!)
- 2. Images should be at least 300dpi.
- 3. Logos, line art, and text should be vector or at least 600dpi.
- 4. Please extend all background elements to bleed (at least .125” past the final cut).

BACK

FRONT



MAIN BODY

FILE SPECIFICATIONS

- 1. Please convert all colors, images, and graphic elements to CMYK Color Mode (no RGB or Pantones, please!)
- 2. Images should be at least 300dpi.
- 3. Logos, line art, and text should be vector or at least 600dpi.
- 4. Please extend all background elements to bleed (at least .125" past the final cut).

INNER RIGHT SIDE

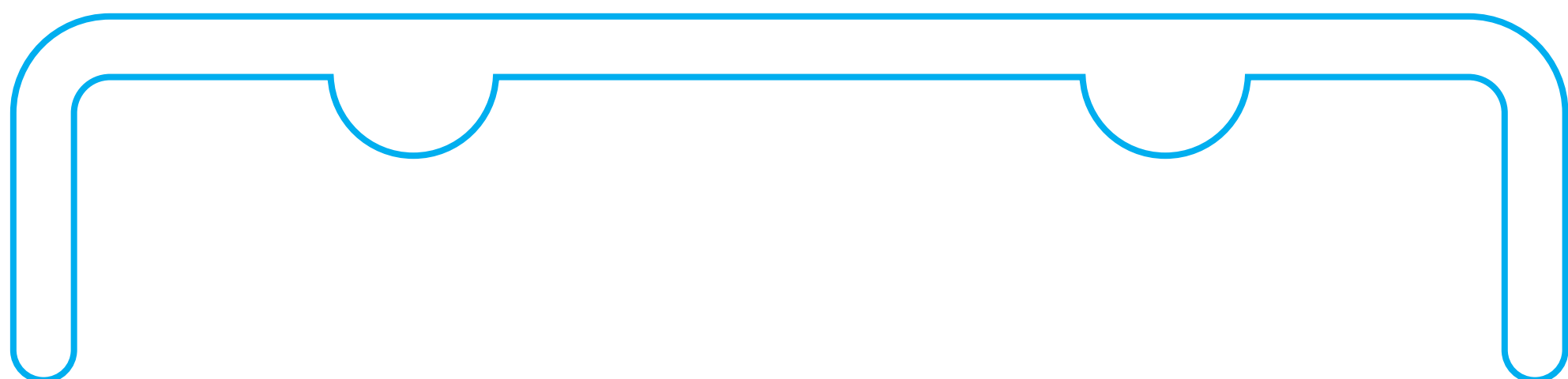
OUTER RIGHT SIDE

OUTER BACK

OUTER LEFT SIDE

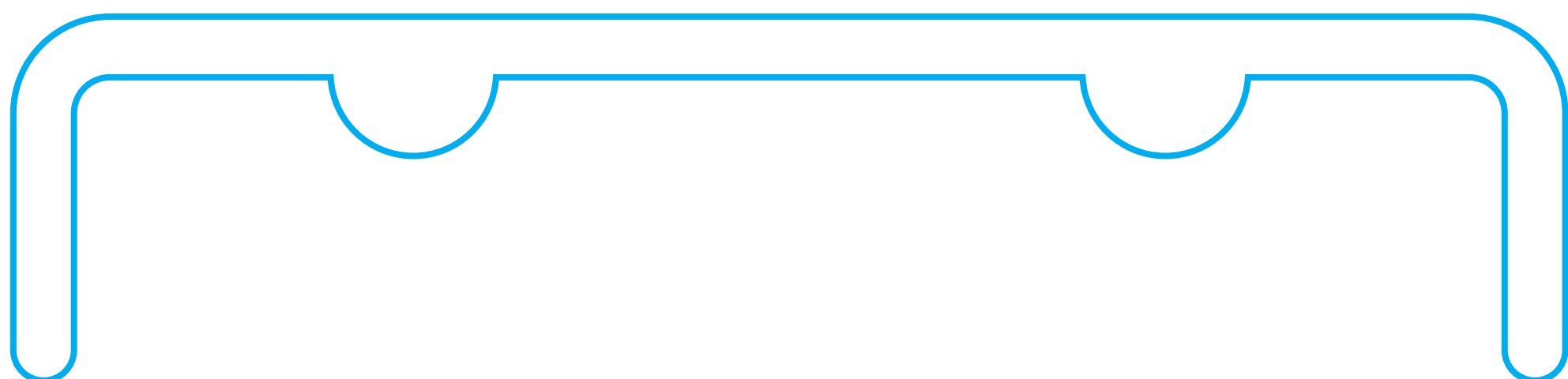
INNER LEFT SIDE

SHELF SUPPORT



FILE SPECIFICATIONS

- 1. Please convert all colors, images, and graphic elements to CMYK Color Mode (no RGB or Pantones, please!)
- 2. Images should be at least 300dpi.
- 3. Logos, line art, and text should be vector or at least 600dpi.
- 4. Please extend all background elements to bleed (at least .125” past the final cut).



INNER LEFT SIDE

INNER BACK

INNER RIGHT SIDE

TOP SHELF

FILE SPECIFICATIONS

- 1. Please convert all colors, images, and graphic elements to *CMYK Color Mode* (no RGB or Pantones, please!)
- 2. Images should be at least 300dpi.
- 3. Logos, line art, and text should be vector or at least 600dpi.
- 4. Please extend all background elements to bleed (at least .125” past the final cut).

BASE

FACE

BOTTOM

MIDDLE SHELF

FILE SPECIFICATIONS

- 1. Please convert all colors, images, and graphic elements to CMYK Color Mode (no RGB or Pantones, please!)
- 2. Images should be at least 300dpi.
- 3. Logos, line art, and text should be vector or at least 600dpi.
- 4. Please extend all background elements to bleed (at least .125” past the final cut).

BASE

FACE

BOTTOM

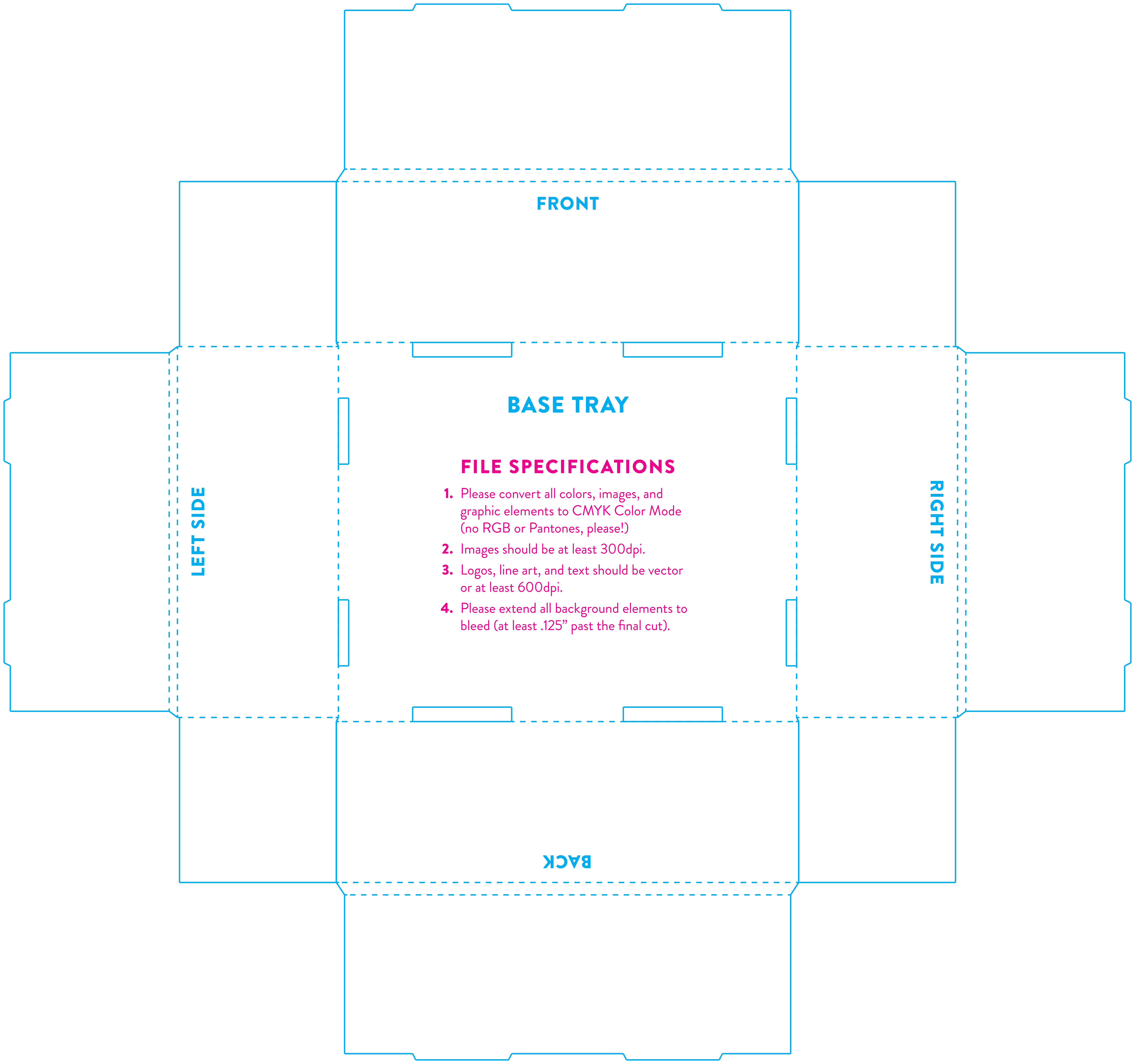


BOTTOM SHELF RISER

FILE SPECIFICATIONS

1. Please convert all colors, images, and graphic elements to CMYK Color Mode (no RGB or Pantones, please!)
2. Images should be at least 300dpi.
3. Logos, line art, and text should be vector or at least 600dpi.
4. Please extend all background elements to bleed (at least .125" past the final cut).

TOP OF RISER



FRONT

BASE TRAY

FILE SPECIFICATIONS

1. Please convert all colors, images, and graphic elements to *CMYK Color Mode* (no RGB or Pantones, please!)
2. Images should be at least 300dpi.
3. Logos, line art, and text should be vector or at least 600dpi.
4. Please extend all background elements to bleed (at least .125" past the final cut).

LEFT SIDE

RIGHT SIDE

BACK