

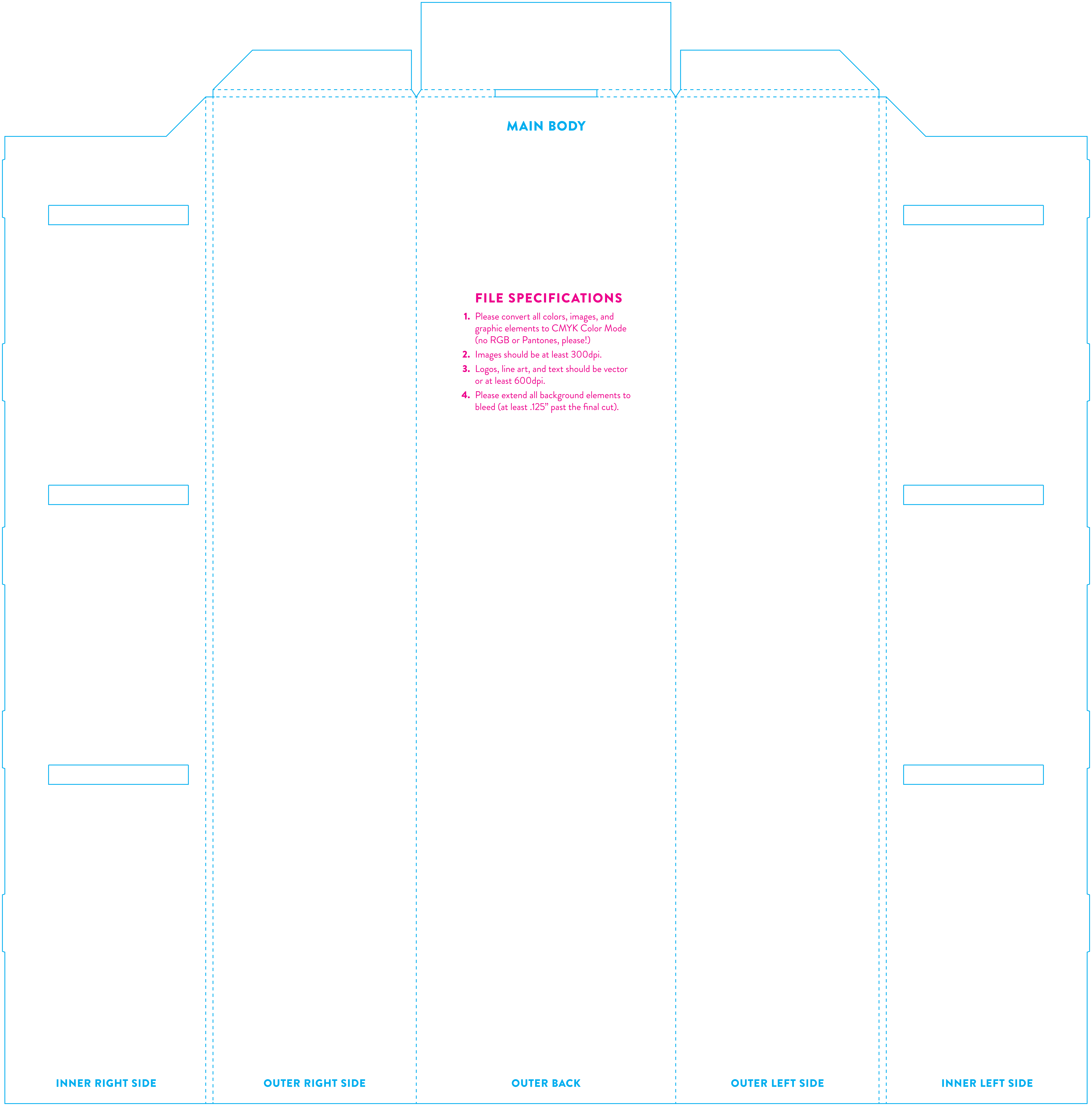
# HEADER CARD

## FILE SPECIFICATIONS

- 1. Please convert all colors, images, and graphic elements to CMYK Color Mode (no RGB or Pantones, please!)
- 2. Images should be at least 300dpi.
- 3. Logos, line art, and text should be vector or at least 600dpi.
- 4. Please extend all background elements to bleed (at least .125” past the final cut).

BACK

FRONT



MAIN BODY

FILE SPECIFICATIONS

- 1. Please convert all colors, images, and graphic elements to CMYK Color Mode (no RGB or Pantones, please!)
- 2. Images should be at least 300dpi.
- 3. Logos, line art, and text should be vector or at least 600dpi.
- 4. Please extend all background elements to bleed (at least .125” past the final cut).

INNER RIGHT SIDE

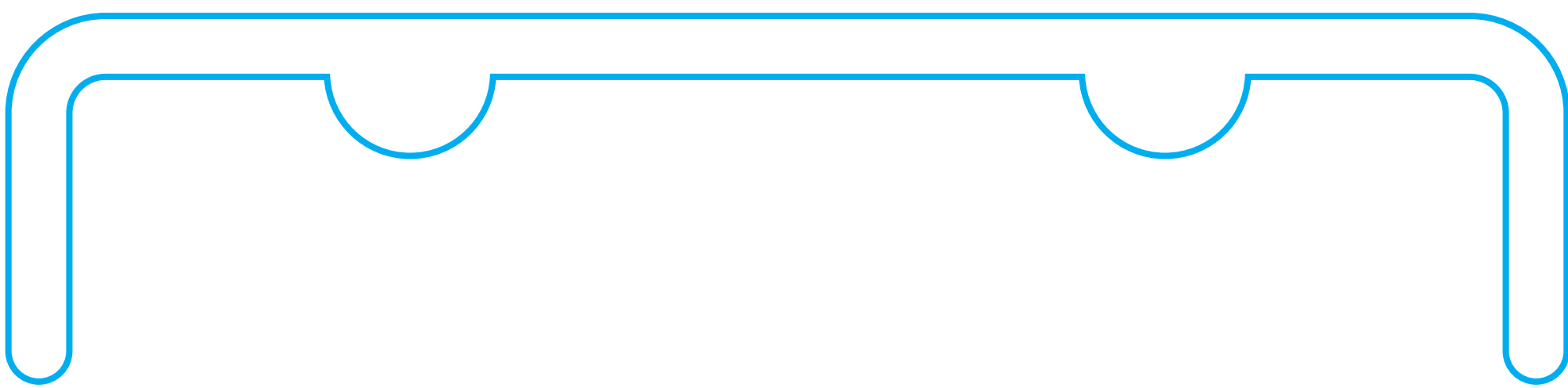
OUTER RIGHT SIDE

OUTER BACK

OUTER LEFT SIDE

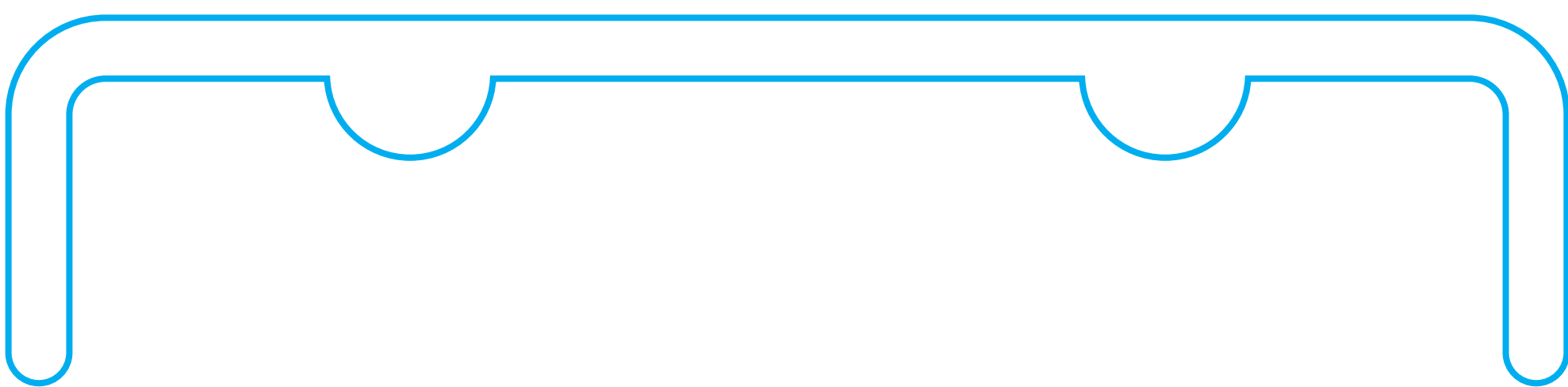
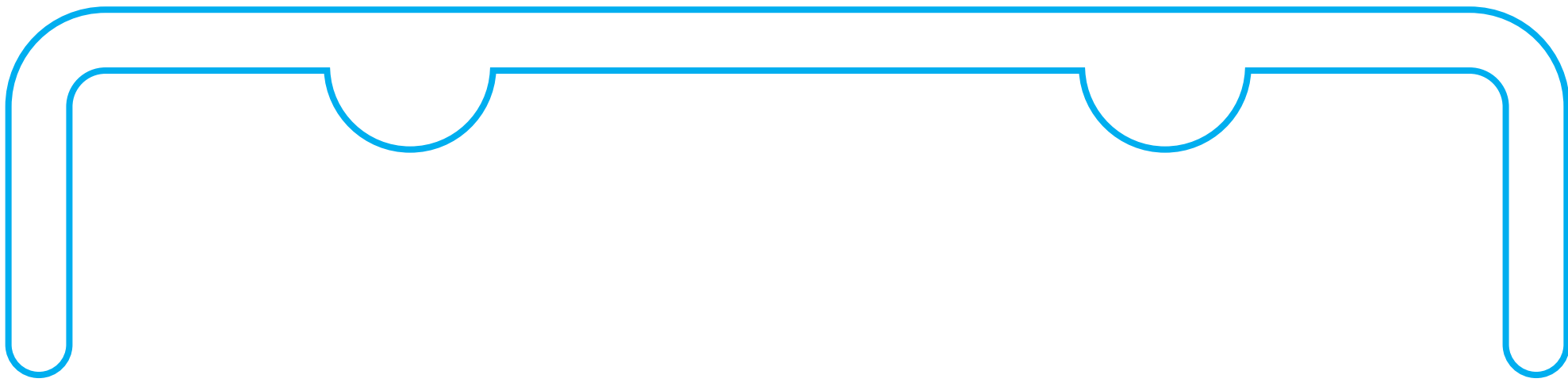
INNER LEFT SIDE

SHELF SUPPORT



FILE SPECIFICATIONS

- 1. Please convert all colors, images, and graphic elements to CMYK Color Mode (no RGB or Pantones, please!)
- 2. Images should be at least 300dpi.
- 3. Logos, line art, and text should be vector or at least 600dpi.
- 4. Please extend all background elements to bleed (at least .125” past the final cut).



# TOP SHELF

## FILE SPECIFICATIONS

- 1. Please convert all colors, images, and graphic elements to *CMYK Color Mode* (no RGB or Pantones, please!)
- 2. Images should be at least 300dpi.
- 3. Logos, line art, and text should be vector or at least 600dpi.
- 4. Please extend all background elements to bleed (at least .125” past the final cut).

## BASE

## FACE

## BOTTOM

# SECOND SHELF

## FILE SPECIFICATIONS

- 1. Please convert all colors, images, and graphic elements to CMYK Color Mode (no RGB or Pantones, please!)
- 2. Images should be at least 300dpi.
- 3. Logos, line art, and text should be vector or at least 600dpi.
- 4. Please extend all background elements to bleed (at least .125” past the final cut).

BASE

FACE

BOTTOM

# THIRD SHELF

## FILE SPECIFICATIONS

- 1. Please convert all colors, images, and graphic elements to *CMYK Color Mode* (no RGB or Pantones, please!)
- 2. Images should be at least 300dpi.
- 3. Logos, line art, and text should be vector or at least 600dpi.
- 4. Please extend all background elements to bleed (at least .125” past the final cut).

BASE

FACE

BOTTOM

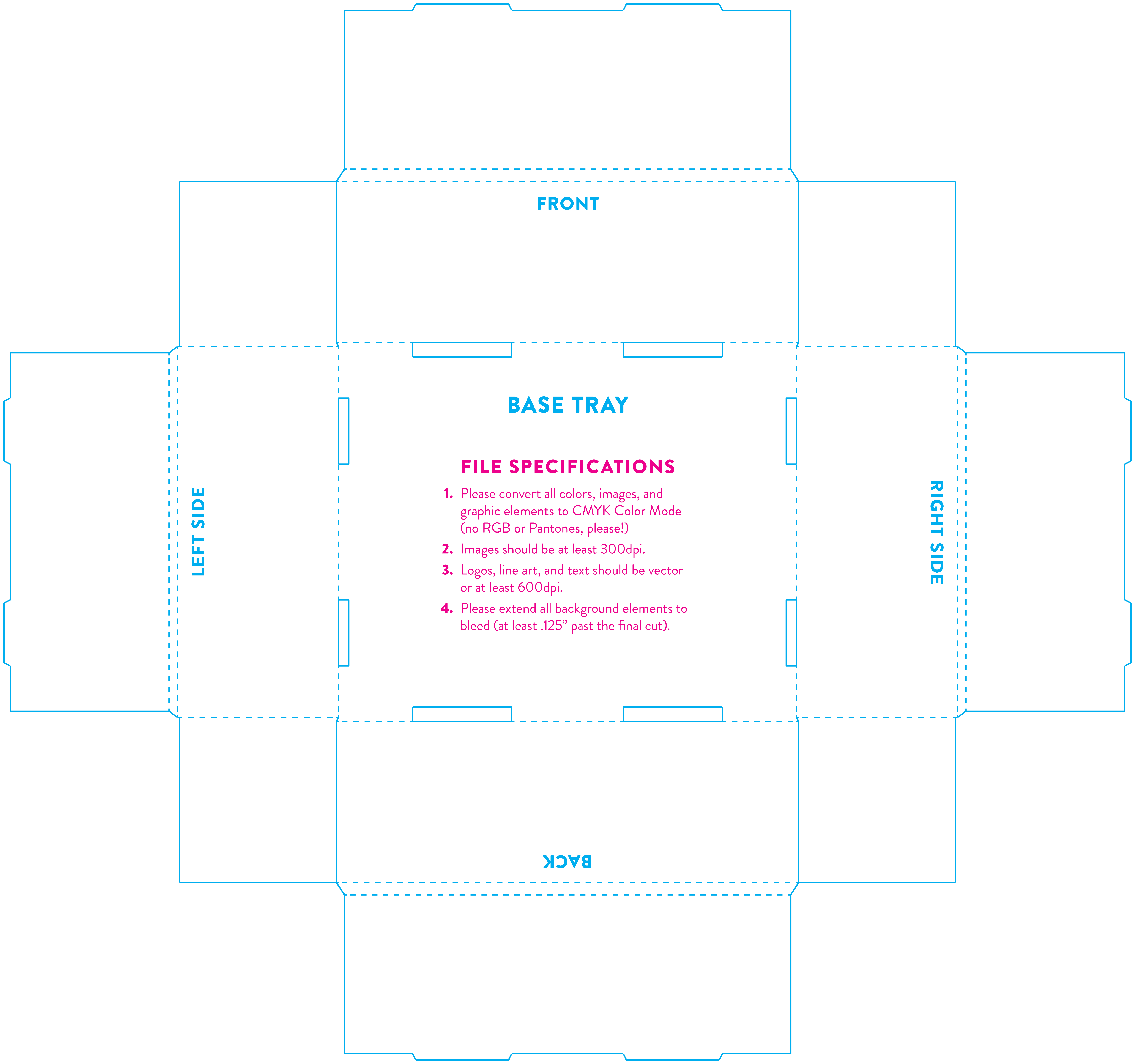


# BOTTOM SHELF RISER

## FILE SPECIFICATIONS

1. Please convert all colors, images, and graphic elements to CMYK Color Mode (no RGB or Pantones, please!)
2. Images should be at least 300dpi.
3. Logos, line art, and text should be vector or at least 600dpi.
4. Please extend all background elements to bleed (at least .125" past the final cut).

TOP OF RISER



FRONT

BASE TRAY

**FILE SPECIFICATIONS**

1. Please convert all colors, images, and graphic elements to *CMYK Color Mode* (no RGB or Pantones, please!)
2. Images should be at least 300dpi.
3. Logos, line art, and text should be vector or at least 600dpi.
4. Please extend all background elements to bleed (at least .125" past the final cut).

LEFT SIDE

RIGHT SIDE

BACK