

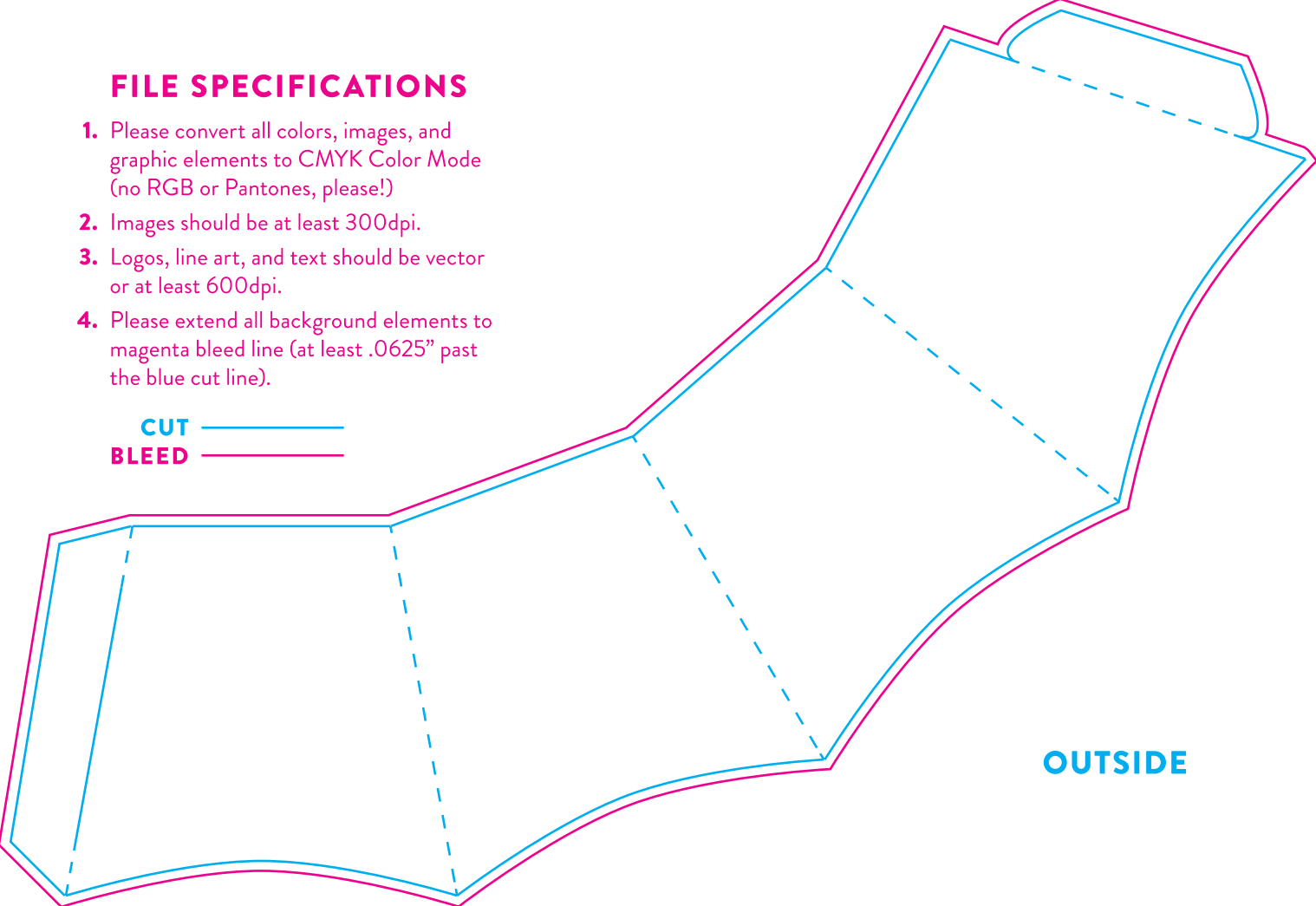
## FILE SPECIFICATIONS

1. Please convert all colors, images, and graphic elements to CMYK Color Mode (no RGB or Pantones, please!)
2. Images should be at least 300dpi.
3. Logos, line art, and text should be vector or at least 600dpi.
4. Please extend all background elements to magenta bleed line (at least .0625" past the blue cut line).

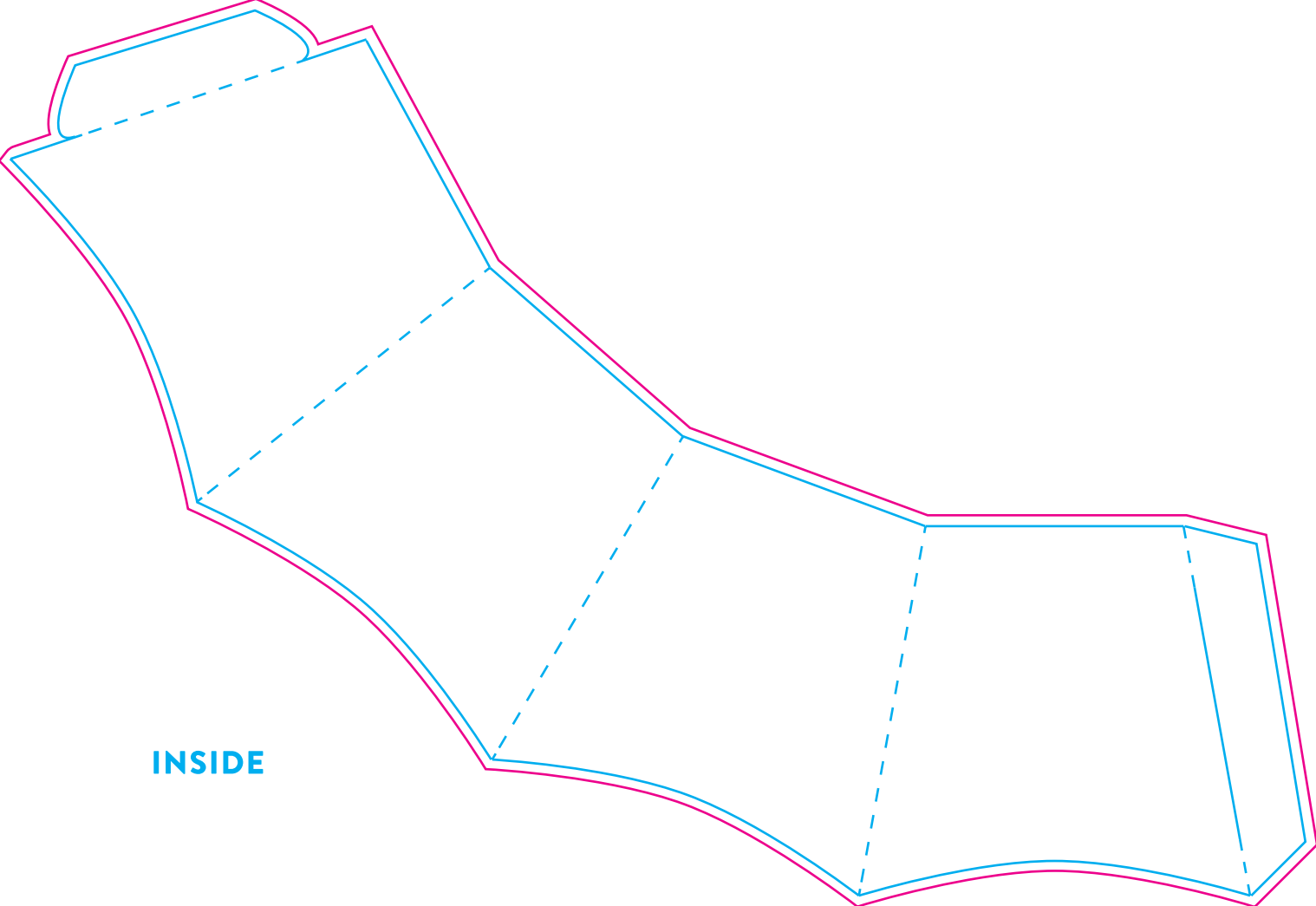
**CUT**



**BLEED**



**OUTSIDE**



INSIDE